



# SJ843 TH

## TELEHANDLER

### KEY FEATURES

- 8,000 lbs (3,629 kg) Maximum lift capacity
- 43' 4" (13.21 m) Maximum lift height
- 6,000 lbs (2,722 kg) Capacity @ maximum lift height
- 28' 7" (8.71 m) Maximum forward reach
- 1,900 lbs (862 kg) Capacity @ maximum forward reach
- DPF & DEF Free Tier 4 Final 74hp / 221 lb-ft Deutz TCD 2.9L engine
- 17,750 lbs Drawbar pull
- 3 Speed Dana powershift transmission & Dana axles
- Yoke mounted lifting hook
- 48" Quick attach, floating pin carriage
- Pallet forks, 2" x 4" x 48", 8,000 lbs capacity

### TIRE OPTIONS

- Foam-filled 13 x 24 16PR hard surface
- Airless solid rubber 13 x 24
- Non-marking foam-filled 13 x 24 16PR rough terrain
- Non-marking airless solid rubber 13 x 24

### STANDARD FEATURES

- Auxiliary hydraulics
- Engine block heater
- Quick attach carriage mount
- Rear window with wiper
- Side window
- Suspension seat
- Single multifunction pilot operated joystick control
- In-cab engine multifunction display
- Hydraulic test ports
- Lockable in-cab storage box
- Rear towing hitch pin
- Fiberglass engine cowling
- Steel component and access covers
- 2-Year Gold Leaf Warranty (5-year structural warranty)

### FORK OPTIONS

- Pallet forks, 2" x 4" x 48" or 60", 8,000 lbs capacity
- Pallet forks, 2" x 5" x 48", 60", 9,200 lbs capacity
- Pallet forks, 2.25" x 5" x 48", 60" or 72", 12,000 lbs capacity
- Fully tapered forks, 1.75" x 7" x 48", 12,000 lbs capacity
- Block forks, (set of 6) 2" x 1.5" x 46", 9,000 lbs capacity

† Standard lead times may be increased when optional equipment is added, consult factory.

‡ Foam-filled tires, standard carriage only. Optional equipment will increase weight.

# SJ843 TH TELEHANDLER

8,000 lbs (3,629 kg) capacity 43' 4" (13.2 m) maximum lift height

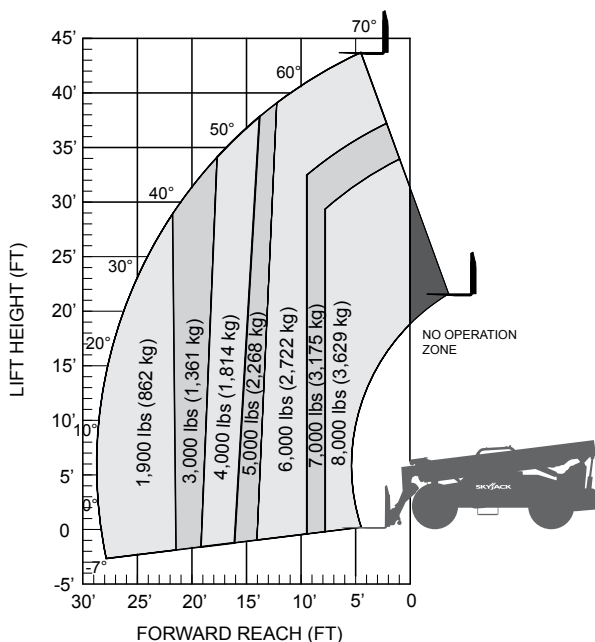
SPECIFICATIONS	SJ843 TH
Maximum Lift Capacity	8,000 lbs (3,629 kg)
Maximum Lift Height	43' 4" (13.21 m)
Rated Lift Capacity @ Maximum Height	6,000 lbs (2,722 kg)
Maximum Forward Reach	28' 7" (8.71 m)
Rated Lift Capacity @ Maximum Reach	1,900 lbs (862 kg)
O/A Length - Less Forks	19' 6" (5.94 m)
Overall Height - Stowed	7' 11" (2.41 m)
Overall Width	8' 5" (2.56 m)
Ground Clearance	19" (48.3 cm)
Turning Radius - Outside	147" (3.73 m)
Operating Weight	23,006 lbs (10,435 kg)
Engine	74hp / 221 lb-ft Deutz TCD 2.9L T4F
Max Travel Speed - Forward	17mph (27 km/h)
Drawbar Pull	17,750 lbs
Transmission	Dana Powershift, 3 Speeds F/R
Axles	Dana
Steering	3 mode (Front Wheel, 4 Wheel, Crab)
Tires	Foam-Filled 13 x 24 16PR Grip Lug
Fuel Tank Capacity	35.7 gal. (142 L)
Hydraulic Reservoir	43.85 gal. (166 L)

## OPTIONS

- Closed cab (adds front and top window, sliding side window, wipers, full door, heater/defroster, operator fan)
- Air conditioning (Closed cab only)
- Premium joystick
- Back up sensor
- Backup sensor and camera
- Service convenience package (remote axle grease points & clean drain engine oil pan valve)
- Cold weather package (cold start engine oil, 50/50 antifreeze mix, battery blanket & hyd. tank heater)
- Four wheel fenders
- Road light package (2 front headlights, front & rear turn signals, tail lights, brake lights)
- Work light package (2 front facing & 2 rear facing halogen work lights)
- Boom Light Package (2 boom mounted LED work lights)
- Rotating beacon
- Positive air shut-off valve
- Reserve brake system
- Pintle hitch (in lieu of standard hitch pin)
- Non-destructive testing
- ELEVATE telematics
- Warranty options (3-year and 5-year options available)

## QUICK ATTACH CARRIAGES/ATTACHMENTS

- 48", 60" or 72" Floating pin carriage, 10,000 lbs capacity
- 48", 60" or 72" Floating pin, side tilt carriage, 10,000 lbs capacity
- 72" Floating pin, swing carriage, 9,000 lbs capacity
- 53" Fork positioner, 10,000 lbs capacity
- 2' High capacity jib boom, 10,000 lbs capacity
- 12' Truss boom, 2,000 lbs capacity
- 1.75 Cubic yard bucket, 4,000 lbs capacity



**Skyjack Head Office**  
 55 Campbell Rd. Guelph, ON Canada N1H 1B9  
 Sales Inquiries: 1-877-755-4387 (1-877-SJLIFTS)  
 Main Switchboard: 1-800-265-2738  
 Phone: 519-837-0888  
 Fax: 519-837-8104  
 Email: skyjack@skyjack.com

[www.skyjack.com](http://www.skyjack.com)

**IMPORTANT** - Machine design complies with ANSI/ITSDF B56.6-2016 stability requirements for rough terrain forklifts. Rated capacities shown are with machine on firm level ground, steered straight with frame level and on properly inflated tires. Read boom angle and boom extension, then determine allowable load from chart. Do not exceed rated loads as dangerous and unstable machine conditions will result. Always travel with boom retracted in the lowest possible position.

**SKYJACK**  
 simply reliable™